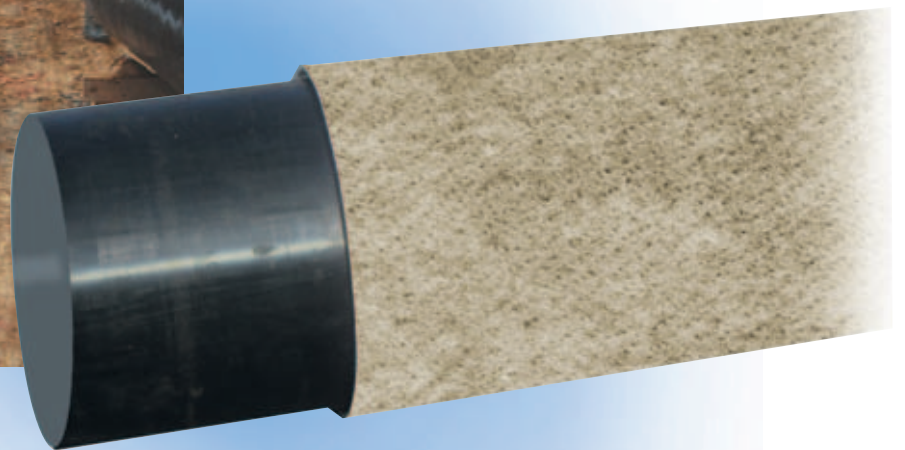




General Information

Technical Data

PSI Rock Shield Fleece



Pipeline Accessories

PSI Rock Shield Fleece

General Information



Pipe protection fleece is another outstanding, **economical alternative** to traditional bedding in sand.

The relevant regulations governing pipe bedding, filling and sealing are to be observed at all times. In particular, DIN 1612, DIN 18300 and the DVGW worksheets G462, G463 and G472 apply.

The PSI rock shield fleece consists of mechanically compressed polypropylene. It is offered with a higher impact strength of 6000 N, suitable for different kinds of applications. With an overlap of approx. 10 cm and a low density gas-flame the PSI rock shield fleece can be welded safely. Rockshield fleece is also suitable for separating pipe coating systems against the earth at thermal loadings of $>50^{\circ}\text{C}$.



Technical data:

PP 1000

Material:	100 % Polypropylene
Weight per unit area:	1000 g/qm
Type of solidification:	Mechanical needle compression
Thickness at 2 kPa superimposed load:	8 mm
Maximum tensile force lengthwise:	27,9 kN/m
Maximum tensile force across:	56,7 kN/m
Impact strength:	6000 N
Width:	0,4 up to 5,0 m
Length per roll:	25 m
Biological resistant:	good
Colour:	colored

The a.m. technical data are average value and could differ from 10 %.

Please contact us for further information.

PSI Rock Shield Net/Rock Shield Fleece Order Form



To:

From:

PSI Products GmbH
Fax +49 (0)7473/37 81 87

Just copy form, fill out the volumes and fax to PSI

Description	Quantity	Type	Art.-No.	€/pcs.	Sum
 <p>Rock Shield Net 6 mm (Roll 20 x 1 m)</p>		6	4-033- 23001		
<p>Rock Shield Net 9 mm (Roll 20 x 1 m)</p>		9	4-033- 23002		
 <p>Accessories Plastic-Pin (Bag with 100 pcs.)</p>			4-033- 23016		
<p>Special width 6 mm (Roll 20 x Meter)</p>		6			
<p>Special width 9 mm (Roll 20 x Meter)</p>		9			
 <p>Rock Shield Fleece 1000g/m² (Roll 1 x 25 m)</p>		PP 1000	4-033- 22990		
<p>Special width PP 1000 (Roll 25 x..... Meter)</p>					

* Prices acc. to valid pricelist

Date / Signature