



[General Information](#)

[Selection Guide](#)

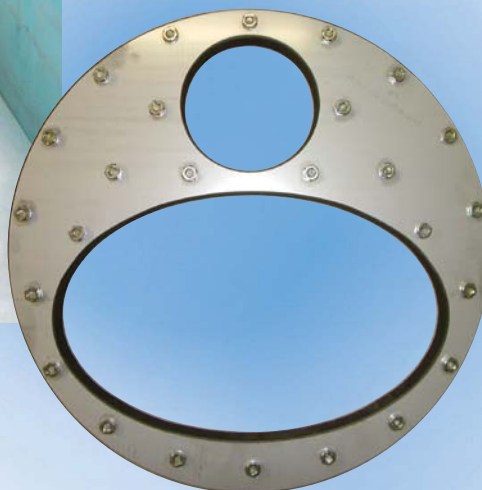
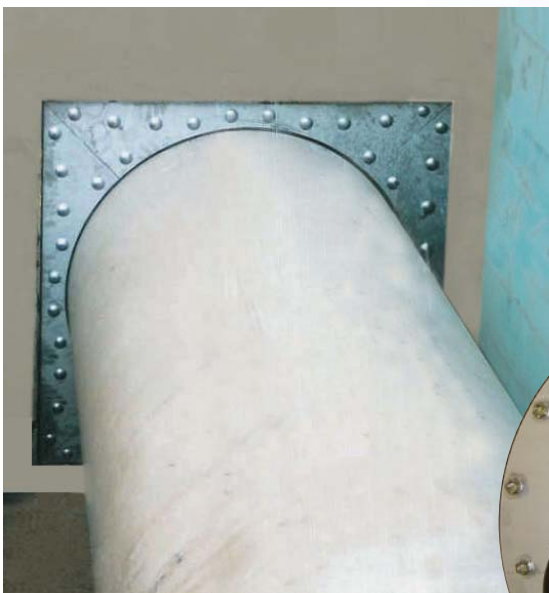
[Order Submittal Sheet](#)

[Installation Instruction](#)

# PSI Kompakt - Special Seals



**Kompakt - special versions  
also with KTW/W270 for potable water**



**Pipeline Accessories**



**The Sealing System**

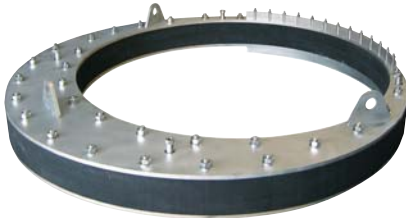
The PSI modular seal Kompakt special version is ideal for sealing gas, water and sewage pipes and cables against pressing and non pressing water.

**Versions**

The PSI modular seals Kompakt special versions are special designs made at the request of the customer. Here, practically all variations are possible: oval pipes, square recesses, excentric position, passing through of several pipes or cables either as split/open or closed versions.

**Material Qualities**

The following rubber qualities are available: EPDM standard, NBR for applications in the field of: methane gas (biogas facilities), Viton and EPDM with KTW/W270 approval for potable water. For the pressure plates, V2A stainless steel is used as the standard. If requested, however, also V4A stainless steel or coated pressure plates, such as epoxy resin are supplied.



	<b>Kompakt special versions</b>	
<b>Pressure plate material</b>	V2A/S304, V4A/S316 upon request	
<b>Closed</b>	standard	
<b>Split/open</b>	available	
<b>Pressure tight</b>	1.5 bar*	
<b>KTW/W270</b>	on request	
<b>Rubber thickness</b>	up to core drilled hole 800 mm – 40 mm from core drilled hole KB 800 mm – 2 x 40 mm	
<b>Rubber material</b>	EPDM Standard available upon request: EPDM with KTW/W270**, Viton, NBR	
<b>Temperature range</b>	EPDM -30°C to +120°C NBR -30°C to + 70°C Viton -20°C to +200°C	
<b>UV-Beständigkeit</b>	EPDM yes NBR no Viton yes	
<b>Shore</b>	EPDM Standard	50 ± 5°
	NBR	50 ± 5°
	EPDM with KTW/W270	50 ± 5°
	Viton	55 ± 5°
<b>core drilled hole min/max</b>	30 - 3,000 mm	

\* The values specified for the pressure tightness are valid at 23°C. For other, above all, higher permanent operating temperatures, an ejection safety device should, if required, be fitted. This also applies to annular spaces ≥100 mm.

\*\* Elastomer tested in accordance with KTW and W 270 for potable water



## Kompakt KTW/W270\*- and Special types

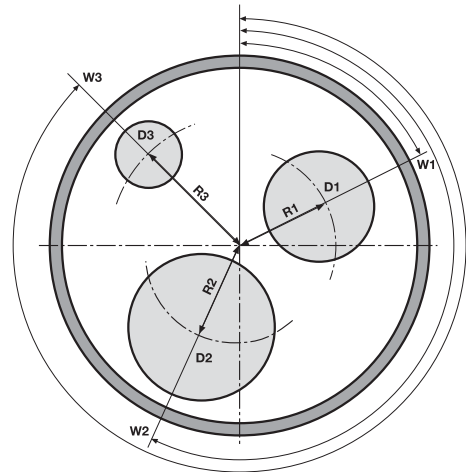
If the carrier pipe is not centred or if you want to seal several carrier pipes or cables in the same wall opening, please fill in the form below or give us a detailed drawing showing all dimensions.

The pressure plates for the special versions will be in stainless steel V2A.

- |                |  |   |
|----------------|--|---|
| Version        | <input type="checkbox"/> closed          | <input type="checkbox"/> divided        |
| Rubber         | <input type="checkbox"/> EPDM (Standard) | <input type="checkbox"/> EPDM-KTW/W270* |
|                | <input type="checkbox"/> NBR             | <input type="checkbox"/> Viton          |
| Pressure plate | <input type="checkbox"/> Standard        | <input type="checkbox"/> Large flange   |
|                | <input type="checkbox"/> V2A (S316)      | <input type="checkbox"/> V4A (S316L)    |

Pressure tight	I.D. core drill /sleeve	.....	mm
	O.D. medium pipe 1	.....	mm
if request for	O.D. medium pipe 2	.....	mm
	O.D. medium pipe 3	.....	mm

Positioning carrier pipe  
 Radius (R), Angle (W) ..... ..



\* Elastomer tested in accordance with KTW and W 270

Despatched by:

\_\_\_\_\_  
 Date/signature