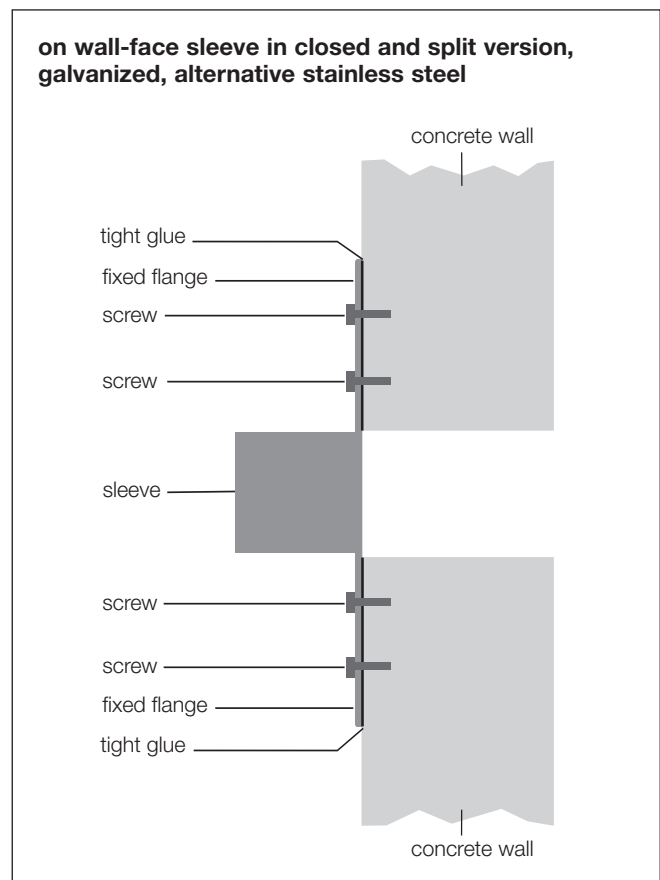
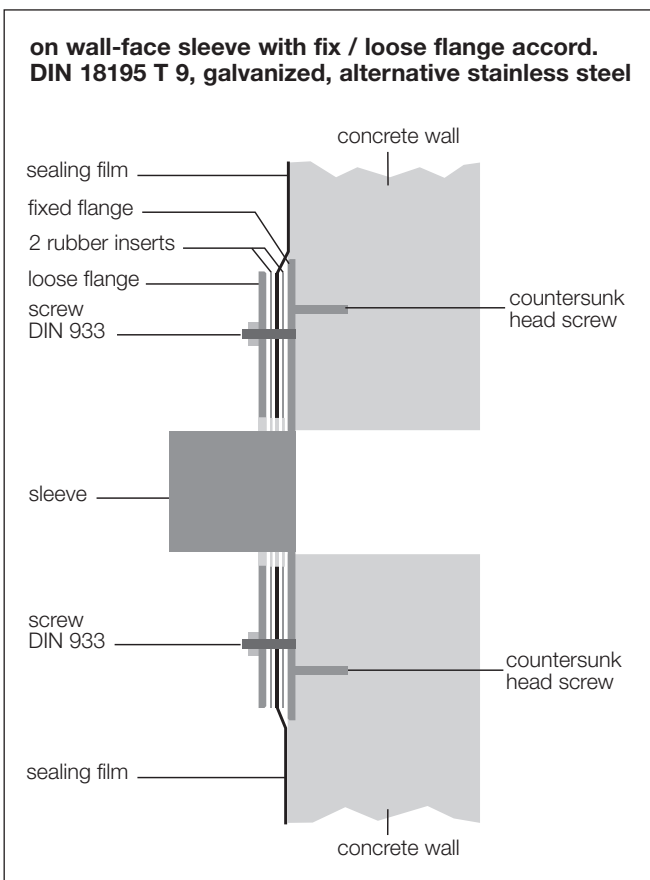
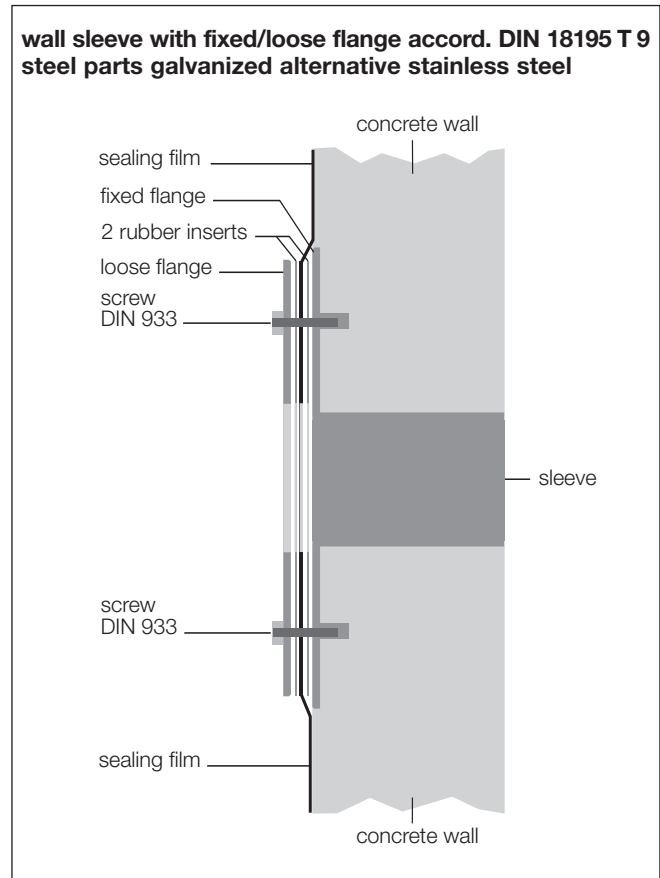
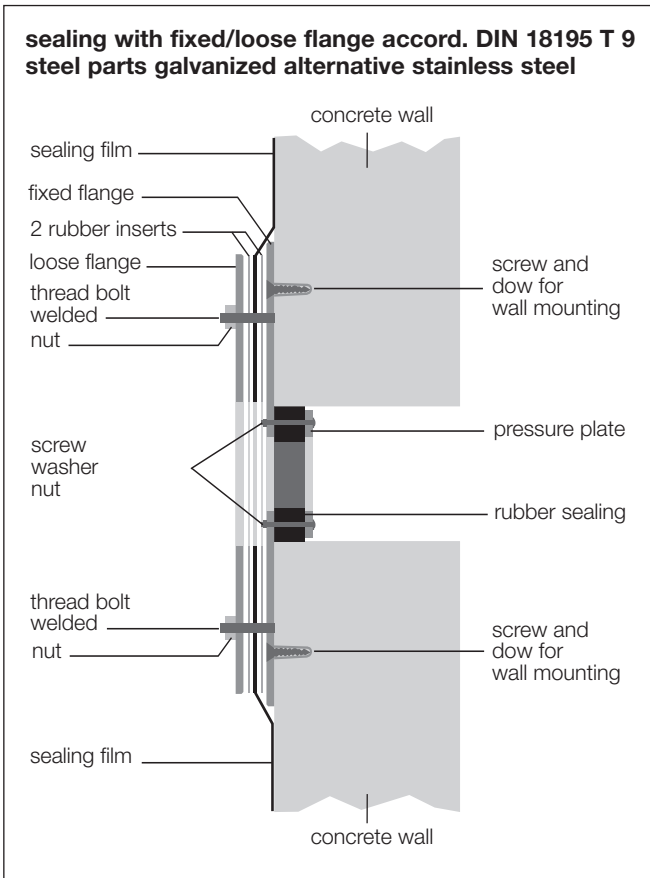


# PSI Compact-Seals

## Sectional View



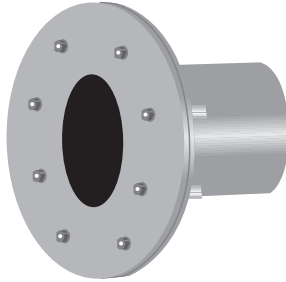
# PSI Kompakt-Seals

## Technical Data



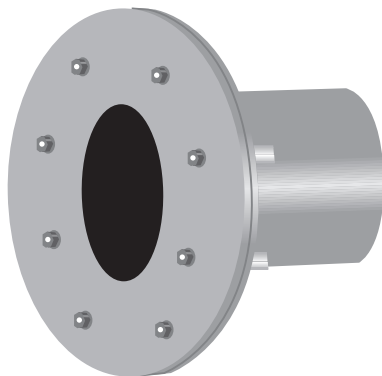
### Wall sleeves with fixed/loose flange

Complying with DIN 18195, Part 9 for constructions with sealing strips. Rubber inlays between flanges can be extra ordered if necessary.



### Wall sleeves for non-pressing water, galvanized version

OD Pipe	ID Sleeve	OD fixed flange	Length of wall sleeve
20-40	80	224	200
15-65	100	244	
55-78	125	269	
46-110	150	294	
88-160	200	344	
135-210	250	396	
178-226	300	446	
224-282	350	496	
270-330	400	548	
300-400	500	648	
400-500	600	748	
500-600	700	848	
600-700	800	948	
700-800	900	1050	
800-900	1000	1150	



### Wall sleeves for pressing water, galvanized version

OD Pipe	ID Sleeve	OD fixed flange	Length of wall sleeve
20-40	80	404	200
15-65	100	424	
55-78	125	449	
46-110	150	474	
88-160	200	524	
135-210	250	576	
178-226	300	626	
224-282	350	676	
270-330	400	728	
300-400	500	828	
400-500	600	928	
500-600	700	1028	
600-700	800	1128	
700-800	900	1230	
800-900	1000	1330	

PSI-inlays are elastomer gaskets which are inserted between fixed and loose flange.

When the sealing film is made of very thin or very hard material the sealing towards the steel underground is too low. Therefore these sealing films demand elastomer gaskets.

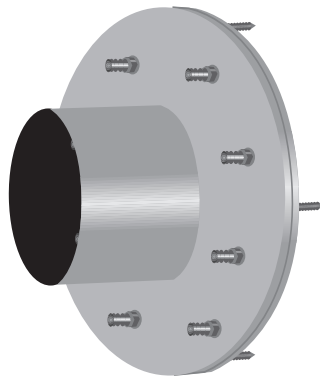
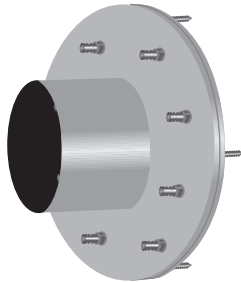
For the following sealing films inlays are intended according Norms: ECB, PIB, PVC-P, EPDM, EVA. We recommend to inset inlays also at films out of PE, PE-H and PVC.

# PSI Compact-Seals

## Technical Data



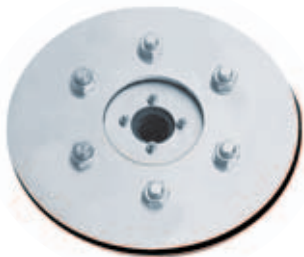
**On wall-face sleeve with fix / loose flange** accord. DIN 18195 T9 for buildings with sealing strips. Rubber inlays between flanges can be extra ordered if necessary.



Further sizes and types in stainless steel on request.

### Seals with fixed/loose flange

Complying with DIN 18195, Part 9 for constructions with sealing strips. strips. Rubber inlays between flanges can be extra ordered if necessary.



PSI-inlays are elastomer gaskets which are inserted between fixed and loose flange. When the sealing film is made of very thin or very hard material the sealing towards the steel underground is too low. Therefore these sealing films demand elastomer gaskets.

For the following sealing films inlays are intended according Norms: ECB, PIB, PVC-P, EPDM, EVA. We recommend to inset inlays also at films out of PE, PE-H and PVC.

**On wall-face sleeve** for non-pressing water, galvanized

OD Pipe	ID Sleeve	OD fixed flange	Length of wall sleeve
20-40	80	224	100
15-65	100	244	
55-78	125	269	
46-110	150	294	
88-160	200	344	
135-210	250	396	
178-226	300	446	
224-282	350	496	
270-330	400	548	
300-400	500	648	
400-500	600	748	
500-600	700	848	
600-700	800	948	
700-800	900	1050	
800-900	1000	1150	

**On wall-face sleeve** for pressing water, galvanized

OD Pipe	ID Sleeve	OD fixed flange	Length of wall sleeve
20-40	80	404	100
15-65	100	424	
55-78	125	449	
46-110	150	474	
88-160	200	524	
135-210	250	576	
178-226	300	626	
224-282	350	676	
270-330	400	728	
300-400	500	828	
400-500	600	928	
500-600	700	1028	
600-700	800	1128	
700-800	900	1230	
800-900	1000	1330	

**Seals** against non-pressing water, galvanized version

OD Pipe	Core drill / ID wall sleeve	OD fixed flange
20-40	80	224
15-65	100	244
55-78	125	269
46-110	150	294
88-144	200	344
135-187	250	396
178-226	300	446
224-282	350	496
270-330	400	546
300-400	500	648
400-500	600	748
500-600	700	848
600-700	800	948
700-800	900	1050
800-900	1000	1150

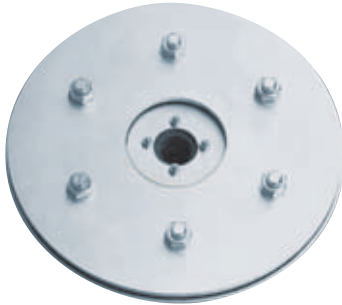
# PSI Compact-Seals

## Technical Data

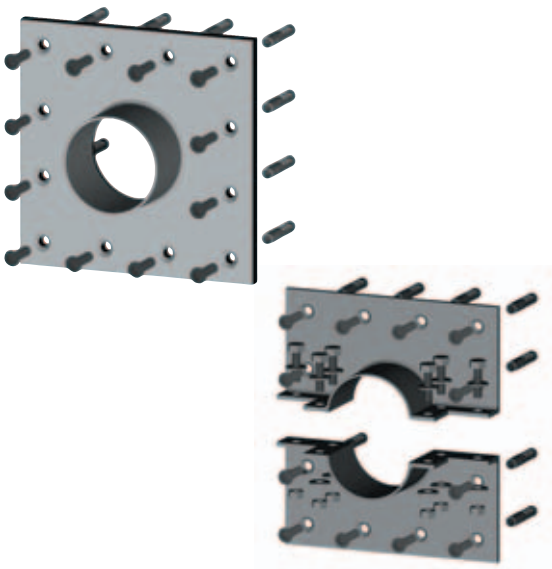


### Seals with fixed/loose flange

Complying with DIN 18195, Part 9 for constructions with sealing strips. Rubber inlays between flanges can be extra ordered if necessary.



PSI-inlays are elastomer gaskets which are inserted between fixed and loose flange. When the sealing film is made of very thin or very hard material the sealing towards the steel underground is too low. Therefore these sealing films demand elastomer gaskets. For the following sealing films inlays are intended according Norms: ECB, PIB, PVC-P, EPDM, EVA. We recommend to inset inlays also at films out of PE, PE-H and PVC.



Seals against pressing water, galvanized version

OD Pipe	OD Sealing	OD Fixed flange
20-40	80	404
15-65	100	424
55-78	125	449
46-110	150	474
88-144	200	524
135-187	250	576
178-226	300	626
224-282	350	676
270-330	400	728
300-400	500	828
400-500	600	928
500-600	700	1028
600-700	800	1128
700-800	900	1230
800-900	1000	1330

On wall-face sleeve in one-piece and multi-part versions - galvanized. For installation in front of a wall or beneath a ceiling, including sealing compound for the wall and fastening materials.

OD Pipe	ID sleeve	Fixed flange edge length	Length of sealing collar
20-40	80	280	60 mm
15-65	100	300	
55-78	125	325	
46-110	150	350	
88-160	200	400	
135-210	250	450	
178-226	300	500	
224-282	350	550	
270-330	400	600	
300-400	500	700	
400-500	600	800	
500-600	700	900	
600-700	800	1000	100 mm
700-800	900	1100	
800-900	1000	1200	

Further sizes and types in stainless steel on request.