

## High Shrink Sleeves

Sleeves for corrosion protection of high profile joints

Canusa-CPS is a leading manufacturer of specialty pipeline coatings which, for over 30 years, have been used for sealing and corrosion protection of pipeline joints and other substrates. Canusa high performance products are manufactured to the highest quality standards and are available in a number of configurations to accommodate your specific project applications.

### Product Description

Canusa High Shrink Sleeves are superior performance heat shrinkable products designed for corrosion protection of flanges, casings, bell and spigot joints and other high profile couplings. High Shrink Sleeves consist of a crosslinked polyolefin backing, coated with a protective heat sensitive adhesive which effectively bonds to steel substrates and common pipeline coatings including polyethylene and fusion bonded epoxy.

### Features & Benefits

#### Flexible & Reliable Installation

High Shrink products are available in three different configurations for flexibility of installation.

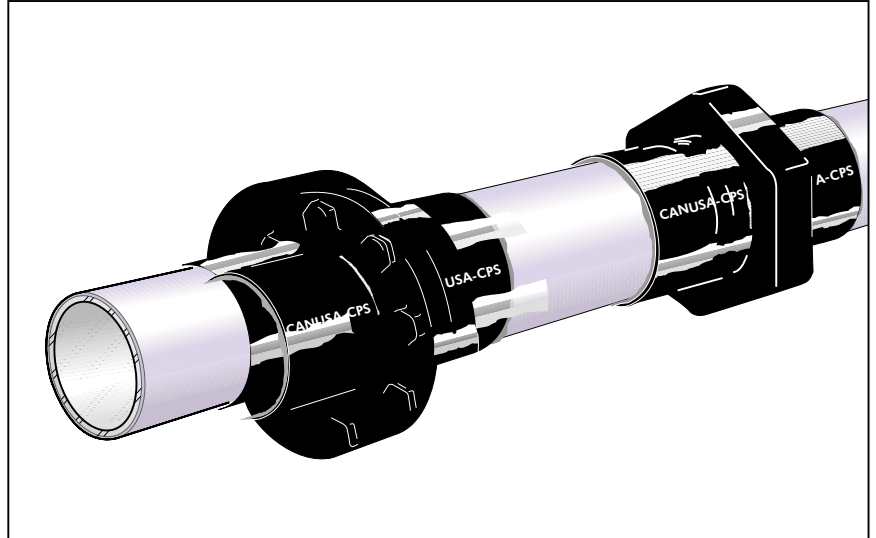
I)The patented Wrapid Sleeve™ (K) incorporates a one-piece pre-attached closure strip that has been factory applied resulting in quick and reliable field installation.

II)The CanusaWrap™ (W) configuration is supplied in a bulk roll, with separate closure seals, providing just-in-time customized lengths. This flexibility results in reduced inventories and cost savings on the job site.

III)The CanusaTube™ (P) consists of a unique tubular configuration that has been factory constructed, resulting in quick and reliable field installation.

#### Long-Term Corrosion Protection

Once installed, the High Shrink Sleeve products have excellent structural integrity, and provide the substrate with durable protection against mechanical and chemical attack. The high performance crosslinked backing provides

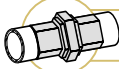
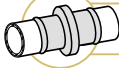
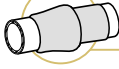



superior abrasion resistance and can be engineered for regular or high stress environments. In combination with Canusa's high performance adhesives, the High Shrink Sleeve provides excellent resistance to cathodic disbondment resulting in effective long term corrosion protection.

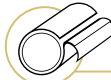



#### Assured Performance

The High Shrink products meet and exceed the requirements of the DIN 30 672 standard for gas and water, and have been fully tested and approved by DVGW (German Gas and Water Authority).

### Applications

-  **Couplings**
-  **Flanges**
-  **Tyton Joints**
-  **Step-Down Joints**

### Configurations

-  **Wrapid Sleeve™**
-  **CanusaWrap™**
-  **CanusaTube™**
-  **High Shrink**

### Temperature Range

-  **Up to 50°C (122°F)**

### Approvals

-  **DIN 30672**

# High Shrink Sleeves

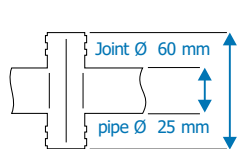
## Product Selection Guide P - CanusaTube™, K - Wrapid Sleeve™, W - CanusaWrap™

Pipe Diameter	DN 25	DN 32/40	DN 50	DN 65	DN 80	DN 100	DN 125	DN 150	DN 200	DN 250	DN 300	DN 400	DN 500	
	1"	1½"	2"	2.5"	3"	4"	5"	6"	8"	10"	12"	16"	20"	
<b>Type of Joint</b>														
<b>Coupling</b>	PMA 70/25, 50/20	PMA 90/30	PMA 120/40	PMA 120/40	PMA 170/80	PMA 200/100	PMA 255/130	PMA 255/130	PMA 425/210	WLOX 1500 mm	WLOX 1700 mm	WLOX 1950 mm	WLOX 2250 mm	
<b>Welded Joint</b>	PMA 40/15, 50/20	PMA 70/25	PMA 90/30	PMA 90/30	PMA 120/40	PMA 170/80	PMA 200/100	Use PLA Standard Shrink Sleeves Please refer to CanusaTube™- PLA data sheet					--	--
<b>Flange DIN 2633 PN 16</b>	--	--	KLOX 185/65	KLOX 185/65	KLOX 200/70	KLOX 220/80	KLOX 315/110	KLOX 315/110	KLOX 340/120	WLOX 1400 mm	WLOX 1600 mm	WLOX 2100 mm	WLOX 2300 mm	
	--	--	--	PMOF 200/70	PMOF 240/90	PMOF 240/90	PMOF 300/110	PMOF 300/110	PMOF 360/130	PMOF 470/170	PMOF 470/170	--	--	
<b>Bell &amp; Spigot (Tyton)</b>	For WLOX, cut the sleeve to the circumference of the bell profile + 100mm. Approximate lengths are shown				PMO 170/80	PMO 200/100	PMO 200/100	PMO 255/160	PMO 310/205	PMO 380/250	PMO 425/285	--	--	
					WLOX 600 mm	WLOX 650 mm	WLOX 725 mm	WLOX 800 mm	WLOX 1000 mm	WLOX 1200 mm	WLOX 1350 mm	WLOX 1700 mm	WLOX 2000 mm	

## Size Selection

For pipe diameters > DN 500 (20"), consult your Canusa representative.

Choose your sleeve based on Type of Joint and Pipe Dimensions



**Example:**  
If the sleeve needs to protect a joint diameter of 60mm, and a pipe diameter of 25mm. **You would need a PMA 70/25**

## Typical Product Properties

Adhesive	Test Standard	Unit	PMO, KLOX, WLOX			PMOF	PMA
Softening Point	ASTM E28	°C	102	91	72		
Lap Shear Strength	DIN 30 672 M	N/cm <sup>2</sup>	40	30	60		
Tensile Strength	ASTM D638	MPa	24	24	24		
Elongation	ASTM D638	%	700	700	700		
Hardness	ASTM D2240	Shore D	48	48	48		
Dielectric Voltage Brkdown	ASTM D149	kV/mm	27	20	20		
Peel	ASTM D1000	N/cm	80	70	50		
Peel	DIN 30 672	N/cm	65	60	35		
Cathodic Disbondment	ASTM G8	mm rad	8	13	13		
Water Absorption	ASTM D570	%	0.05	0.05	0.05		
Low Temp. Flexibility	ASTM D2671	°C	-14	-14	-32		
DIN Approval	DIN 30 672	class	C30	--	C50		

## Operating Characteristics

**Pipeline Operating Temp.**

Celsius	Fahren.
80°	176°
70°	158°
60°	140°
50°	122°
40°	104°

Min. Install'n Temp. ■ °C(°F)  
Main Line Coating Compatibility

PMO KLOX WLOX	PMOF	PMA
75(167) PE,PP, FBE,PU,CT	50(122) PE,PU, FBE	60(140) PE,PU, FBE

## How To Order:

Product		Available Widths	Colours	Thickness*	Ordering Example
CanusaTube	<b>PMA</b> <170mm Ø	<b>100, 300, 500, 1000, 1500 mm</b> (4", 12", 20", 40", 60")	<b>BK</b> - Black	<b>3.2 mm</b> (126 mils)	<b>PMA-120/40-1500-BK</b>
	<b>PMA</b> >170mm Ø	<b>300, 450, 600 mm</b> (12", 18", 24")	<b>BK</b> - Black	<b>3.8 mm</b> (148 mils)	<b>PMA-170/80-450-BK</b>
	<b>PMO</b>	<b>300, 450, 600 mm</b> (12", 18", 24")	<b>BK</b> - Black <b>BL</b> - Blue	<b>3.2 mm</b> (126 mils)	<b>PMO-200/100-450-BK</b>
	<b>PMOF</b> sleeve skirting	<b>300 mm</b> (12") <b>150 mm</b> (6")	<b>450, 600 mm</b> (18", 24") <b>200 mm</b> (8")	<b>BK</b> - Black	<b>2.5 mm</b> (98 mils)
Wrapid Sleeve	<b>KLOX</b>	<b>300, 450, 600 mm</b> (12", 18", 24")	<b>BK</b> - Black	<b>5.9 mm</b> (234 mils)	<b>KLOX-220/80-300-BK</b>
CanusaWrap	<b>WLOX</b>	<b>300, 450, 600, 900 mm</b> (12", 18", 24", 36")	<b>BK</b> - Black <b>BL</b> - Blue	<b>3.5 mm</b> (138 mils)	<b>WLOX-B-450-30-BK</b>
	<b>Closure Seal (with WLOX)</b>	<b>300, 450, 600, 900 mm</b> (12", 18", 24", 36")	<b>BK</b> - Black	<b>1.6 mm</b> (62 mils)	<b>CLH-115-450-BK</b> or <b>CLH-150-450-BK</b>

\* Fully Recovered Thickness

PSI Products GmbH  
Ulrichstrasse 25  
72116 Mössingen



Tel: 0049 (0) 7473/3781-0  
Fax: 0049 (0) 7473/3781-35

[vertrieb@psi-products.de](mailto:vertrieb@psi-products.de)

[www.psi-products.de](http://www.psi-products.de)